

# CITIZEN'S CHARTER

## KARNATAKA STATE WAREHOUSING CORPORATION

**# 43, PRIMROSE ROAD,  
BANGALORE -560025.**

**FAX : 080-25577324**

**Web:www.kswc.in**

**E-Mail: md@ karnatakawarehousing.in**

**PHONE : 25571012 /13**

## ***CONTENTS***

### **CITIZEN'S CHARTER**

<b>SL NO</b>	<b>SUBJECT</b>
<b>1</b>	<b>INTRODUCTION</b>
<b>2</b>	<b>VISION OF THE CORPORATION</b>
<b>3</b>	<b>MISSION OF THE CORPORATION</b>
<b>4</b>	<b>OBJECTIVES OF THE CORPORATION</b>
<b>5</b>	<b>ADMINISTRATIVE STRUCTURE OF CORPORATION</b>
<b>6</b>	<b>DUTIES AND RESPONSIBILITES</b>
<b>7</b>	<b>FUNCTIONS OF CORPORATION</b>
<b>8</b>	<b>LATEST TECHNOLOGY</b>
<b>9</b>	<b>DISSEMINATION OF INFORMATION THROUGH PUBLICATIONS</b>
<b>10</b>	<b>HOW THE CITIZEN CAN UTILIZE THE SERVICE OF WAREHOUSES</b>
<b>11</b>	<b>SCHEDULE OF STORAGE CHARGES FOR STANDARD-RATED AND HIGH RATED WAREHOUSE</b>
<b>12</b>	<b>INFORMATION UNDER RTI 2005 ACT</b>
<b>13</b>	<b>GRIEVANCES READRESSAL MECHANISM CELL</b>
<b>14</b>	<b>LIST OF TELEPHONE NOS @ H.O AND REGIONAL MANAGERS OFFICE</b>



# KARNATAKA STATE WAREHOUSING CORPORATION

FAX : 080-25577324  
080- 25598577

NO. 43, PRIMROSE ROAD, BANGALORE  
[WWW.KARNATAKAWAREHOUSING.IN](http://WWW.KARNATAKAWAREHOUSING.IN)  
E-Mail: md@karnatakawarehousing.in

PHONE : 25571012  
25571013

---

## **CITIZEN'S CHARTER.**

### **INTRODUCTION:**

The Karnataka State Warehousing Corporation was established during 1957 under the Agricultural produce (Development and Warehousing) Corporations Act 1956, later repealed by the Warehousing Corporation Act 1962. The Corporation started functioning initially with 3 Warehouse centres at Mysore, Hubli and Raichur. At present there are 122 warehouse centres located throughout the state.

### **Vision of the Corporation:**

Providing scientific storage facility to the Agricultural produces, and other commodities and minimizing the storage losses and to support market to overcome from volatile market prices of Agricultural commodities to the possible extent.

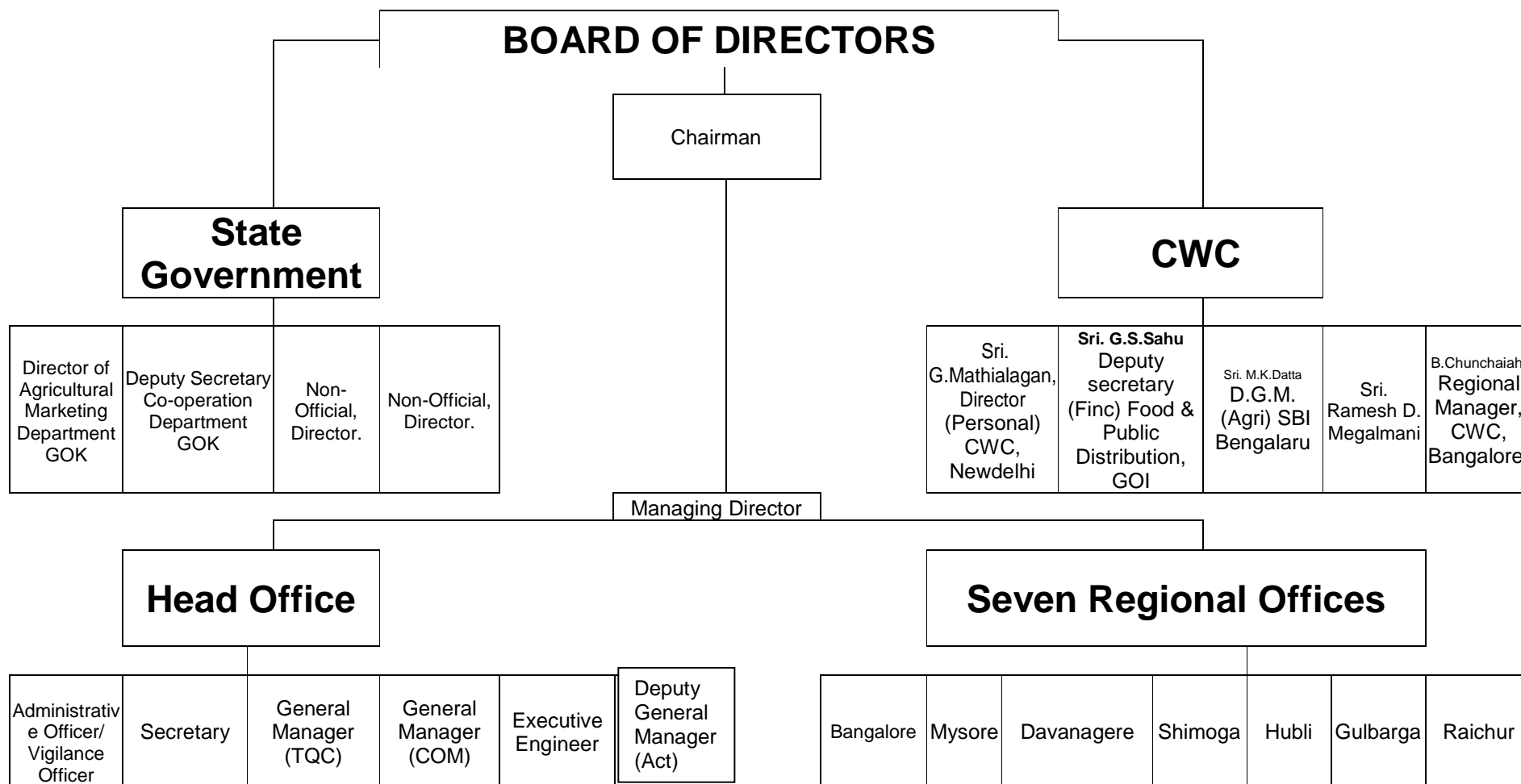
### **Mission of the Corporation:**

Expansion of the required infrastructure for easy and viable accesses for the farmers to store their buffer stock at the affordable storage charges. Effective participation in post harvest management. To prevent the distress sale of the stocks produced by the farmers.

### **Objectives of the Corporation:**

- To construct and manage Warehouses in the State for the storage of agricultural produces, seeds, manure, fertilizers, agricultural implements and other notified commodities and preserve them scientifically.
- To enhance the storage capacity by procuring land and constructing godowns at potential places to fill the gap of storage space in the State.
- To support Public Distribution System in the state through proper storage and up-keeping.
- To Arrange facilities for the transport of agricultural produce, seeds, fertilizers etc, for the convenience of farmers and bulk depositors.
- To provide prophylactic and curative measures for the stocks stored in the godowns

# ADMINISTRATIVE STRUCTURE



**129 Warehouse Centres headed by Warehouse Managers.**

## **DUTIES AND RESPONSIBILITIES**

### **REGIONAL MANAGER**

- Close supervision over the work of Warehouses In-charge and watch over their Activities.
- Finding out the causes for decrease in the business of various centres and to suggest ways to improve the business. Propaganda/Publicity, holding Meeting to attract more business.
- Maintain contact with the Depositors of his Region and with the Chief of APMC/ Office and Food and Civil Supplies/D.C and all Departments concerned. Cordial Relations with Bank & Insurance Companies.
- Follow-up and collection of outstanding dues (Storage Charges /Fumigation Charges) from Depositors/Companies etc., To ensure proper supply of Chemicals to Centers to avoid shortage of supply of chemicals and necessary timely fumigation.
- Collections of Marketing Information.
- To hold Meeting/discussions with Warehouse In-charges in his Regions to overcome the difficulties faced by Warehouses Managers and Depositors.
- Overall supervisions of Region for smooth conduct of Transactions.
- Regular inspection/Audit of Warehouses in his Region, and ensure proper follow up action.

## **WAREHOUSE MANGER**

- Deposit of Goods & issue of Warehouse receipts.
- Maintenance of goods in hygienic conditions, free from dampness and leakage to prevent loss/damage while in storage.
- He shall accept all agricultural Produces without any discrepancies.He shall insure all goods accepted.
- He should release the stocks accepted for storage whenever the depositors demands.
- He shall write all Books and Registers.
- He shall keep the Warehouse open during the business hours as per Rule No.40 of the Mysore Warehouse Rules. 1967.
- He shall not mix two different unlike commodities like Fertilizers and Food grains.
- The Commodities pledged with the bank should not be delivered to the depositors unless instructed by the banks.
- Warehouse Managers are responsible for stocks, cash, records, equipments and all other properties of the Corporation.
- He shall, write the cash book every day after the close of that day.
- He is responsible for publicity and propaganda in attracting business and keep the Centers under profit.
- All returns/reports/statements of all the companies to be submitted on time.
- Maintaining cordial relations with all the depositors.
- Any other work entrusted by the Managing Director

## **Functions of the Corporation:**

- **Augmentation of Storage Capacity for scientific storage of Stocks stored in the Warehouse through prompt up keeps with insurance coverage.**
- **Provide facility to store the pre and post sowing inputs like seeds, fertilizers and agriculture equipments etc., and stream lining the storage facility to PDS commodities.**
- **Effective management of the post harvest agriculture activities by providing scientific solution to over come distress.**
- **Supporting the Agriculture Market by ensuring timely, smooth and easy flow of goods into the market to ensure price stability.**

## **Latest Technology:**

**All sections in Head office of the Corporation are provided with Computer and the Head Office is in the process of complete computerization. All the systems at Head office are connected by LAN and Internet facility. The website of the Corporation [www.kswc.in/www.karnatakawarehousing.in](http://www.kswc.in/www.karnatakawarehousing.in) is updated from time to time.**

**To facilitate trading of Agricultural commodity at Warehouse centers by establishing on-line trading facility (NCDEX Pilot Project at Gulbarga & Bidar).**

## **Dissemination of Information through Publications:**

**After the Annual General Body meeting every year the Corporation is bringing out the Annual Report of the Corporation.**

## **How the citizens can utilize the service of warehouses:**

- 1. Any citizen (i.e. Agriculturists, Traders, Co-op Societies etc.,) can approach the Warehouse Centers (129 Centers) and deposit their products in the Warehouses. The grains are deposited by filling a deposit form. The Warehouse Manager will issue a Negotiable Warehouse Receipt intimating the commodity no's of bags, weight, rate and total value of the stocks. The validity of the grains will also be indicated.**

**The grains are kept free from infestation on regular prophylactic treatment to the grains that are stored. A nominal storage charges per bag per month will be charged while taking delivery of the stocks. The Storage Charges will however differ from Centre to Centre depending on the slab. Anybody can keep their commodity in the Warehouse.**

**A rebate in storage charges is allowed for Bonafied agriculturist, SC/ST agriculturists as well as women agriculturists. There are 129 Centers located throughout the State as mentioned below.**

<b>Bonafied agriculturist</b>	<b>15%</b>
<b>Women agriculturist</b>	<b>20%</b>
<b>Agriculturist belonging to SC/ST</b>	<b>25%</b>

- 2. At times, when the Storage space is not unavailable in the godown, hired godowns are taken to store the excess stocks. However if the hired space is also not available, the food grains of the citizen will be treated prophylatically at a nominal cost at their residence or at places where it is stored.**
- 3. The Warehouse Receipt (Negotiable) can be pledged with any Banks, Financial Institutions and avail the loan.**



**SCHEDULE OF STORAGE CHARGES FOR STANDARD-RATED AND HIGH RATED WAREHOUSE**

SI NO	Name of the Commodity	Type of Package	Net Weight in Kgs.	For Standard-rated Warehouses with a basic rate of Rs.3.75 per bag		For High-rated Warehouse with a basic rate of Rs.4.60 per bag per month		For high-rated Warehouse with a basic rate of Rs.5.00 per bag per month		Remarks
				Per month	Per Week	Per month	Per Week	Per month	Per Week	
				Rs. Ps.	Rs. Ps.	Rs. Ps.	Rs. Ps.	Rs. Ps.	Rs. Ps.	
				5	6	7	8	9	10	
				SLAB I		SLAB II		SLAB III		
<b>I</b>	<b>FOOD GRAINS:</b>									
	1) All food grains (other than following food grains)	Bags	1--25	1.15	0.30	1.20	0.30	1.30	0.35	
		Bags	26--50	1.90	0.50	2.30	0.60	2.55	0.65	
		Bags	51--75	2.85	0.50	3.50	0.90	3.80	1.00	
		Bags	76--100	3.75	1.00	4.60	1.15	5.00	1.25	
	2) Rice	Bags	1--25	1.20	0.30	1.30	0.35	1.50	0.40	
		Bags	26--50	2.40	0.60	2.75	0.70	3.00	0.75	
		Bags	51--75	3.40	0.90	3.90	1.00	4.20	1.10	
		Bags	76--100	4.50	1.20	5.20	1.30	6.00	1.50	
	3) Paddy	Bags	upto 50	2.75	0.70	3.20	0.80	3.50	0.90	

			<b>Bags</b>	<b>51--75</b>	<b>3.50</b>	<b>0.90</b>	<b>4.00</b>	<b>1.00</b>	<b>4.50</b>	<b>1.20</b>	
			<b>Bags</b>	<b>76 &amp; above</b>	<b>4.60</b>	<b>1.15</b>	<b>5.20</b>	<b>1.30</b>	<b>5.50</b>	<b>1.40</b>	
	<b>4)</b>	<b>Ragi</b>	<b>Bags</b>	<b>50</b>	<b>1.80</b>	<b>0.45</b>	<b>2.00</b>	<b>0.50</b>	<b>2.10</b>	<b>0.55</b>	
			<b>Bags</b>	<b>100</b>	<b>3.50</b>	<b>0.90</b>	<b>3.90</b>	<b>1.00</b>	<b>4.10</b>	<b>1.05</b>	
	<b>5)</b>	<b>Oats</b>	<b>Bags</b>	<b>65</b>	<b>3.00</b>	<b>0.75</b>	<b>3.30</b>	<b>0.85</b>	<b>3.50</b>	<b>0.90</b>	
	<b>6)</b>	<b>Maize</b>	<b>Bags</b>	<b>upto 50</b>	<b>2.30</b>	<b>0.60</b>	<b>2.70</b>	<b>0.70</b>	<b>3.50</b>	<b>0.90</b>	
			<b>Bags</b>	<b>51--75</b>	<b>3.30</b>	<b>0.85</b>	<b>3.50</b>	<b>0.90</b>	<b>4.50</b>	<b>1.15</b>	
			<b>Bags</b>	<b>76--100</b>	<b>4.40</b>	<b>1.10</b>	<b>5.20</b>	<b>1.30</b>	<b>6.00</b>	<b>1.50</b>	
	<b>7)</b>	<b>Jowar</b>	<b>Bags</b>	<b>1--25</b>	<b>1.15</b>	<b>0.30</b>	<b>1.30</b>	<b>0.35</b>	<b>1.50</b>	<b>0.40</b>	
			<b>Bags</b>	<b>26--50</b>	<b>1.90</b>	<b>0.50</b>	<b>2.50</b>	<b>0.60</b>	<b>2.60</b>	<b>0.70</b>	
			<b>Bags</b>	<b>51--75</b>	<b>2.85</b>	<b>0.70</b>	<b>3.40</b>	<b>0.85</b>	<b>3.50</b>	<b>0.90</b>	
			<b>Bags</b>	<b>76--100</b>	<b>3.75</b>	<b>0.95</b>	<b>4.60</b>	<b>1.15</b>	<b>5.00</b>	<b>1.25</b>	
	<b>8)</b>	<b>Bajra</b>	<b>Bags</b>	<b>1--25</b>	<b>1.10</b>	<b>0.50</b>	<b>1.20</b>	<b>0.30</b>	<b>1.30</b>	<b>0.35</b>	
			<b>Bags</b>	<b>26--50</b>	<b>1.80</b>	<b>0.45</b>	<b>2.40</b>	<b>0.60</b>	<b>2.60</b>	<b>0.70</b>	
			<b>Bags</b>	<b>51--75</b>	<b>2.70</b>	<b>0.70</b>	<b>3.30</b>	<b>0.85</b>	<b>3.60</b>	<b>0.90</b>	
			<b>Bags</b>	<b>76--100</b>	<b>3.60</b>	<b>0.90</b>	<b>4.40</b>	<b>1.10</b>	<b>4.75</b>	<b>1.20</b>	
	<b>9)</b>	<b>Wheat</b>	<b>Bags</b>	<b>upto 50</b>	<b>2.50</b>	<b>0.65</b>	<b>2.90</b>	<b>0.75</b>	<b>3.00</b>	<b>0.80</b>	

			<b>Bags</b>	<b>51--75</b>	<b>3.85</b>	<b>0.90</b>	<b>4.25</b>	<b>1.10</b>	<b>4.50</b>	<b>1.15</b>	
			<b>Bags</b>	<b>76--100</b>	<b>5.00</b>	<b>1.25</b>	<b>5.65</b>	<b>1.40</b>	<b>6.00</b>	<b>1.50</b>	
<b>II</b>		<b>FOOD PRODUCTS:</b>									
	<b>1)</b>	<b>Beaten Rice</b>	<b>Bags</b>	<b>1--25</b>	<b>1.10</b>	<b>0.30</b>	<b>1.25</b>	<b>0.35</b>	<b>1.30</b>	<b>0.40</b>	
			<b>Bags</b>	<b>26--50</b>	<b>1.35</b>	<b>0.35</b>	<b>1.80</b>	<b>0.45</b>	<b>2.40</b>	<b>0.60</b>	
			<b>Bags</b>	<b>51--75</b>	<b>2.65</b>	<b>0.70</b>	<b>3.20</b>	<b>0.80</b>	<b>3.50</b>	<b>0.90</b>	
			<b>Bags</b>	<b>76--100</b>	<b>3.60</b>	<b>0.90</b>	<b>4.25</b>	<b>1.10</b>	<b>4.70</b>	<b>1.55</b>	
	<b>2)</b>	<b>Parched Rice</b>	<b>Bags</b>	<b>1--25</b>	<b>0.80</b>	<b>0.20</b>	<b>0.90</b>	<b>0.25</b>	<b>1.00</b>	<b>0.25</b>	
			<b>Bags</b>	<b>26--50</b>	<b>1.50</b>	<b>0.35</b>	<b>1.60</b>	<b>0.40</b>	<b>1.80</b>	<b>0.45</b>	
			<b>Bags</b>	<b>51--75</b>	<b>2.20</b>	<b>0.55</b>	<b>2.35</b>	<b>0.60</b>	<b>2.65</b>	<b>0.70</b>	
			<b>Bags</b>	<b>76--100</b>	<b>3.00</b>	<b>0.75</b>	<b>3.10</b>	<b>0.80</b>	<b>3.60</b>	<b>0.90</b>	
	<b>3)</b>	<b>Maida,Soji(Rawa)'P ea-flour, Bean(Bengalagram Flour)</b>	<b>Bags</b>	<b>50</b>	<b>2.20</b>	<b>0.55</b>	<b>2.75</b>	<b>0.70</b>	<b>2.90</b>	<b>0.75</b>	
			<b>Bags</b>	<b>100</b>	<b>4.40</b>	<b>1.10</b>	<b>5.50</b>	<b>1.40</b>	<b>5.75</b>	<b>1.45</b>	
	<b>4)</b>	<b>Wheat Flour(Atta)</b>	<b>Bags</b>	<b>50</b>	<b>2.20</b>	<b>0.55</b>	<b>2.55</b>	<b>0.65</b>	<b>2.90</b>	<b>0.75</b>	
			<b>Bags</b>	<b>100</b>	<b>4.40</b>	<b>1.10</b>	<b>5.00</b>	<b>1.25</b>	<b>5.75</b>	<b>1.50</b>	
	<b>5)</b>	<b>Sago</b>	<b>Bags</b>	<b>100</b>	<b>4.00</b>	<b>1.00</b>	<b>4.50</b>	<b>1.15</b>	<b>5.50</b>	<b>1.40</b>	
	<b>6)</b>	<b>Tapioca Chips</b>	<b>Bags</b>	<b>65</b>	<b>3.90</b>	<b>1.00</b>	<b>4.20</b>	<b>1.10</b>	<b>4.70</b>	<b>1.20</b>	

	7)	Tapioca tubers	Bags	70	4.30	1.10	4.40	1.15	4.80	1.20	
<b>III</b>		<b>FERTILIZERS :</b>									
	1	All Fertilizers	Bags	PER MT	34.00	8.50	37.00	9.25	40.00	10.00	
	2	Bone Meal	Bags	100	2.90	0.75	3.70	0.95	3.90	1.00	
<b>IV</b>		<b>PULSES (WHOLE &amp; BROKEN)</b>									
	1	(BROKEN)Bengal Gram, Green Gram, Horse Gram,Black Gram,Peas, Lintels and all other pulses	Bags	1--25	2.00	0.50	2.20	0.60	2.50	0.65	
			Bags	26--50	3.00	0.75	3.30	0.85	3.50	0.90	
			Bags	51--75	4.00	1.00	4.20	1.10	4.50	1.15	
			Bags	76--100	5.50	1.40	5.80	1.45	6.00	1.50	
	2	Bengal Gram Dal, Green Gram Dal, Black Gram Dal & All other Dals.	Bags	1--25	2.15	0.55	2.30	0.60	2.60	0.70	
			Bags	26--50	3.20	0.80	3.30	0.85	3.60	0.90	
			Bags	51--75	4.15	1.05	4.30	1.10	4.60	1.15	
			Bags	76--100	5.50	1.40	5.90	1.50	6.20	1.60	
<b>V</b>		<b>SPCIES</b>									
	1	Chillies	Bags	22 to 45	8.80	2.20	9.70	2.45	10.70	2.70	

			<b>Package</b>	<b>46 to 70</b>	<b>13.50</b>	<b>3.40</b>	<b>15.20</b>	<b>3.80</b>	<b>17.00</b>	<b>4.25</b>	
			<b>Andems</b>	<b>71 to 95</b>	<b>18.50</b>	<b>4.65</b>	<b>20.00</b>	<b>5.00</b>	<b>22.00</b>	<b>5.50</b>	
			<b>Andems</b>	<b>96 Kg &amp; Above</b>	<b>19.25</b>	<b>5.00</b>	<b>20.60</b>	<b>5.15</b>	<b>22.20</b>	<b>5.60</b>	
		<b>Turmeric</b>	<b>Bags</b>	<b>45</b>	<b>3.85</b>	<b>1.00</b>	<b>4.50</b>	<b>1.15</b>	<b>4.85</b>	<b>1.25</b>	
	<b>2</b>	<b>Turmeric</b>	<b>Bags</b>	<b>46-67</b>	<b>4.25</b>	<b>1.05</b>	<b>5.00</b>	<b>1.25</b>	<b>5.35</b>	<b>1.35</b>	
		<b>Turmeric</b>	<b>Bags</b>	<b>68-90</b>	<b>4.70</b>	<b>1.20</b>	<b>5.50</b>	<b>1.40</b>	<b>5.90</b>	<b>1.50</b>	
	<b>3</b>	<b>Coriander</b>	<b>Bags</b>	<b>45</b>	<b>3.90</b>	<b>1.00</b>	<b>4.70</b>	<b>1.20</b>	<b>5.20</b>	<b>1.30</b>	
	<b>4</b>	<b>Methi(Fenugreek)</b>	<b>Bags</b>	<b>100</b>	<b>5.80</b>	<b>1.45</b>	<b>5.85</b>	<b>1.50</b>	<b>6.20</b>	<b>1.60</b>	
	<b>5</b>	<b>Aniseed (Saunf)</b>	<b>Bags</b>	<b>45</b>	<b>3.40</b>	<b>0.85</b>	<b>4.20</b>	<b>1.05</b>	<b>4.50</b>	<b>1.15</b>	
	<b>6</b>	<b>Cumin(Zeera)</b>	<b>Bags</b>	<b>60</b>	<b>4.00</b>	<b>1.00</b>	<b>4.60</b>	<b>1.15</b>	<b>5.00</b>	<b>1.25</b>	
	<b>7</b>	<b>Celery, Dry Ginger, Ajwan Lovage, Rajgira (Ramdhan)</b>	<b>Bags</b>	<b>75</b>	<b>4.80</b>	<b>1.20</b>	<b>5.50</b>	<b>1.40</b>	<b>6.00</b>	<b>1.50</b>	
	<b>8</b>	<b>Black Peppers( Kala Mirchi)</b>	<b>Bags</b>	<b>85</b>	<b>6.00</b>	<b>1.50</b>	<b>6.60</b>	<b>1.65</b>	<b>7.25</b>	<b>1.80</b>	
	<b>9</b>	<b>Cardamaum</b>	<b>Bags</b>	<b>85</b>	<b>29.00</b>	<b>7.25</b>	<b>32.00</b>	<b>8.00</b>	<b>34.00</b>	<b>8.50</b>	
	<b>10</b>	<b>Tamarind</b>	<b>Bag/Andems</b>	<b>50</b>	<b>5.80</b>	<b>1.45</b>	<b>6.00</b>	<b>1.50</b>	<b>6.20</b>	<b>1.60</b>	
	<b>11</b>	<b>Dalchini (Cinnamon)</b>	<b>Bags</b>	<b>50</b>	<b>3.80</b>	<b>0.95</b>	<b>4.20</b>	<b>1.05</b>	<b>4.50</b>	<b>1.15</b>	

<b>VI</b>		<b>OIL:</b>									
	<b>A</b>	<b>EDIBLE OIL :</b>									
		<b>1. Groundnut, Mustard &amp; Safflower oil</b>	<b>Tins</b>	<b>16.60</b>	<b>1.85</b>	<b>0.50</b>	<b>2.00</b>	<b>0.55</b>	<b>2.20</b>	<b>0.60</b>	
		<b>2. Hydrogenated Vegetable oil, Coconut oil</b>	<b>Tins</b>	<b>16.60</b>	<b>2.20</b>	<b>0.55</b>	<b>2.50</b>	<b>0.65</b>	<b>2.60</b>	<b>0.70</b>	
		<b>3. Groundnut oil</b>	<b>Drums</b>	<b>180</b>	<b>19.40</b>	<b>4.85</b>	<b>20.60</b>	<b>5.20</b>	<b>23.00</b>	<b>5.75</b>	
		<b>4. Ghee</b>	<b>Tins</b>	<b>17</b>	<b>3.20</b>	<b>0.80</b>	<b>3.40</b>	<b>0.85</b>	<b>3.80</b>	<b>0.95</b>	
	<b>B</b>	<b>NON EDIBLE OIL :</b>									
		<b>1. Neem oil</b>	<b>Tins</b>	<b>16.60</b>	<b>1.40</b>	<b>0.40</b>	<b>2.00</b>	<b>0.50</b>	<b>2.20</b>	<b>0.55</b>	
		<b>2. Caster oil</b>	<b>Tins</b>	<b>16.60</b>	<b>1.40</b>	<b>0.40</b>	<b>2.00</b>	<b>0.50</b>	<b>2.20</b>	<b>0.55</b>	
		<b>3. Honge oil</b>	<b>Tins</b>	<b>16.60</b>	<b>1.40</b>	<b>0.40</b>	<b>2.00</b>	<b>0.50</b>	<b>2.20</b>	<b>0.55</b>	
		<b>4. Linseed oil</b>	<b>Tins</b>	<b>16.60</b>	<b>1.40</b>	<b>0.40</b>	<b>2.00</b>	<b>0.50</b>	<b>2.20</b>	<b>0.55</b>	
<b>VII</b>		<b>OIL SEEDS :</b>									
	<b>A.</b>	<b>EDIBLE :</b>									
		<b>1. a) Groundnut pods</b>	<b>Bags</b>	<b>40</b>	<b>3.90</b>	<b>1.00</b>	<b>4.50</b>	<b>1.15</b>	<b>5.00</b>	<b>1.25</b>	
		<b>b) Groundnut Kernels</b>	<b>Bags</b>	<b>1--25</b>	<b>1.20</b>	<b>0.30</b>	<b>1.40</b>	<b>0.35</b>	<b>1.60</b>	<b>0.40</b>	
			<b>Bags</b>	<b>26--50</b>	<b>2.50</b>	<b>0.65</b>	<b>2.80</b>	<b>0.70</b>	<b>3.25</b>	<b>0.80</b>	
			<b>Bags</b>	<b>51--75</b>	<b>3.70</b>	<b>0.95</b>	<b>4.15</b>	<b>1.05</b>	<b>4.20</b>	<b>1.10</b>	

			<b>Bags</b>	<b>100</b>	<b>4.85</b>	<b>1.20</b>	<b>5.50</b>	<b>1.40</b>	<b>6.50</b>	<b>1.65</b>	
		<b>2. Mustard,Sesamum (TIL), Poppy</b>	<b>Bags</b>	<b>100</b>	<b>4.60</b>	<b>1.20</b>	<b>5.25</b>	<b>1.35</b>	<b>6.10</b>	<b>1.55</b>	
		<b>3. Niger, Safflower</b>	<b>Bags</b>	<b>100</b>	<b>4.65</b>	<b>1.20</b>	<b>5.25</b>	<b>1.30</b>	<b>6.05</b>	<b>1.50</b>	
		<b>4. Copra</b>	<b>Bags</b>	<b>45</b>	<b>5.30</b>	<b>1.35</b>	<b>6.00</b>	<b>1.50</b>	<b>7.00</b>	<b>1.75</b>	
			<b>Bags</b>	<b>46-55</b>	<b>5.85</b>	<b>1.50</b>	<b>6.60</b>	<b>1.65</b>	<b>7.70</b>	<b>2.00</b>	
		<b>5. Soya Bean</b>	<b>Bags</b>	<b>1--25</b>	<b>1.20</b>	<b>0.30</b>	<b>1.30</b>	<b>0.35</b>	<b>1.50</b>	<b>0.40</b>	
			<b>Bags</b>	<b>26-50</b>	<b>2.40</b>	<b>0.60</b>	<b>2.65</b>	<b>0.70</b>	<b>3.00</b>	<b>1.50</b>	
			<b>Bags</b>	<b>51-75</b>	<b>3.55</b>	<b>0.75</b>	<b>4.00</b>	<b>1.00</b>	<b>4.50</b>	<b>1.15</b>	
			<b>Bags</b>	<b>100</b>	<b>4.60</b>	<b>1.15</b>	<b>5.30</b>	<b>1.35</b>	<b>6.00</b>	<b>1.50</b>	
		<b>6. Sunflower</b>	<b>Bags</b>	<b>50</b>	<b>3.00</b>	<b>0.75</b>	<b>4.00</b>	<b>1.00</b>	<b>5.50</b>	<b>1.40</b>	
			<b>Bags</b>	<b>51-75</b>	<b>5.00</b>	<b>1.25</b>	<b>6.00</b>	<b>1.50</b>	<b>7.00</b>	<b>1.75</b>	
	<b>B</b>	<b>NON-EDIBLE</b>									
		<b>1. Linseed</b>	<b>Bags</b>	<b>75</b>	<b>3.30</b>	<b>0.85</b>	<b>3.60</b>	<b>0.90</b>	<b>4.60</b>	<b>1.15</b>	
		<b>2. Honge Seeds</b>	<b>Bags</b>	<b>1--21</b>	<b>0.80</b>	<b>0.20</b>	<b>1.00</b>	<b>0.25</b>	<b>1.15</b>	<b>0.30</b>	
			<b>Bags</b>	<b>22-42</b>	<b>1.75</b>	<b>0.40</b>	<b>1.85</b>	<b>0.50</b>	<b>2.30</b>	<b>0.60</b>	
			<b>Bags</b>	<b>43-63</b>	<b>2.60</b>	<b>0.65</b>	<b>2.80</b>	<b>0.70</b>	<b>3.60</b>	<b>0.90</b>	
			<b>Bags</b>	<b>64-85</b>	<b>3.50</b>	<b>0.90</b>	<b>3.70</b>	<b>0.95</b>	<b>4.80</b>	<b>1.20</b>	

		<b>3. Hippe Seeds</b>	<b>Bags</b>	<b>75</b>	<b>3.30</b>	<b>0.85</b>	<b>3.60</b>	<b>0.90</b>	<b>4.60</b>	<b>1.15</b>	
		<b>4. Neem Seeds</b>	<b>Bags</b>	<b>100</b>	<b>4.40</b>	<b>1.10</b>	<b>5.00</b>	<b>1.25</b>	<b>5.50</b>	<b>1.40</b>	
		<b>5. Hemp Seeds</b>	<b>Bags</b>	<b>100</b>	<b>4.40</b>	<b>1.10</b>	<b>5.00</b>	<b>1.25</b>	<b>5.50</b>	<b>1.10</b>	
		<b>Hemp Seeds</b>	<b>Bags</b>	<b>25</b>	<b>2.20</b>	<b>0.55</b>	<b>2.45</b>	<b>0.60</b>	<b>3.20</b>	<b>0.80</b>	
		<b>Hemp Seeds</b>	<b>Bags</b>	<b>40</b>	<b>2.70</b>	<b>0.70</b>	<b>3.00</b>	<b>0.75</b>	<b>3.20</b>	<b>0.80</b>	
		<b>6. Cotton Seeds</b>	<b>Bags</b>	<b>40</b>	<b>3.60</b>	<b>0.90</b>	<b>3.85</b>	<b>1.00</b>	<b>4.60</b>	<b>1.15</b>	
<b>VIII</b>		<b>OIL CAKES:</b>									
	<b>1</b>	<b>Cotton Seeds, Safflower, Groundnut,Til Niger</b>	<b>Bags</b>	<b>75</b>	<b>4.40</b>	<b>1.10</b>	<b>4.50</b>	<b>1.20</b>	<b>5.00</b>	<b>1.25</b>	
	<b>2</b>	<b>Linseed, Honge, Hippe Neem seeds and Castor seeds</b>	<b>Bags</b>	<b>75</b>	<b>3.40</b>	<b>0.85</b>	<b>4.10</b>	<b>1.05</b>	<b>4.25</b>	<b>1.10</b>	
<b>IX</b>		<b>FIBRES :</b>									
	<b>1</b>	<b>a) Cotton Lint (Fully pressed)</b>	<b>Bales</b>	<b>200</b>	<b>26.70</b>	<b>6.75</b>	<b>29.00</b>	<b>7.25</b>	<b>33.20</b>	<b>8.30</b>	
		<b>b) Cotton</b>	<b>In Docra s</b>	<b>200</b>	<b>42.00</b>	<b>10.50</b>	<b>46.00</b>	<b>11.50</b>	<b>52.00</b>	<b>13.00</b>	
	<b>2</b>	<b>a) Cotton Yarn</b>	<b>Bales</b>	<b>180</b>	<b>27.50</b>	<b>6.90</b>	<b>28.20</b>	<b>7.05</b>	<b>30.00</b>	<b>7.50</b>	



		<b>b) Cotton Yarn</b>	<b>Wood en Cases</b>	<b>145</b>	<b>25.50</b>	<b>6.50</b>	<b>27.00</b>	<b>6.75</b>	<b>30.60</b>	<b>7.65</b>	
	<b>3</b>	<b>JUTE :</b>									
		<b>a) Katcha</b>	<b>Bales</b>	<b>37</b>	<b>3.20</b>	<b>0.80</b>	<b>3.40</b>	<b>0.85</b>	<b>4.20</b>	<b>1.05</b>	
		<b>b) Loose</b>	<b>Bales</b>	<b>37</b>	<b>3.10</b>	<b>0.80</b>	<b>4.15</b>	<b>1.05</b>	<b>4.25</b>	<b>1.10</b>	
<b>X</b>		<b>CARE ARTICLES:</b>									
	<b>1</b>	<b>Bulgar Wheat (Khapali)</b>	<b>Bags</b>	<b>upto 50</b>	<b>3.50</b>	<b>0.90</b>	<b>4.00</b>	<b>1.00</b>	<b>4.50</b>	<b>1.15</b>	
			<b>Bags</b>	<b>above 51</b>	<b>4.60</b>	<b>1.20</b>	<b>5.30</b>	<b>1.35</b>	<b>6.00</b>	<b>1.50</b>	
	<b>2</b>	<b>CSM (Blended food Product, Corn, Soyabeen &amp; Milk)</b>	<b>Bags</b>	<b>100</b>	<b>5.50</b>	<b>1.40</b>	<b>5.60</b>	<b>1.45</b>	<b>6.05</b>	<b>1.50</b>	
	<b>3</b>	<b>Milk Powder</b>	<b>Bags</b>	<b>26</b>	<b>2.10</b>	<b>0.55</b>	<b>2.50</b>	<b>0.65</b>	<b>3.00</b>	<b>0.75</b>	
	<b>4</b>	<b>Salad Oil</b>	<b>Drum</b>	<b>220</b>	<b>23.60</b>	<b>5.90</b>	<b>26.00</b>	<b>6.50</b>	<b>28.00</b>	<b>7.00</b>	
			<b>Carto on</b>	<b>25</b>	<b>3.20</b>	<b>0.80</b>	<b>3.30</b>	<b>0.85</b>	<b>3.50</b>	<b>0.90</b>	
	<b>5</b>	<b>Butter oil</b>	<b>Carto on</b>	<b>16</b>	<b>2.00</b>	<b>0.50</b>	<b>2.20</b>	<b>0.55</b>	<b>2.30</b>	<b>0.60</b>	
<b>XI</b>		<b>Sugar &amp; Gur (JAGGERY):</b>									

	1	Sugar & Khandasari	Bags	100	4.70	1.20	5.60	1.40	6.00	1.50	
			Bags	50	2.20	0.55	2.60	0.65	3.20	0.80	
	2	Gur (Jaggery)	Bags	75	7.70	2.00	8.50	2.15	9.00	2.25	
	3	Gur Powder	Bags	110	6.30	1.60	6.60	1.65	7.25	1.80	
	4	Gur Pendes	Pindi	20	1.95	0.50	2.20	0.55	2.50	0.65	
	5	Gur Lumps	Lump	35	3.00	0.75	3.15	0.80	3.50	0.90	
<b>XII</b>		<b>FEED &amp; FODDER :</b>									
	1	Wheat Husk, Gram Husk	Bags	25	2.80	0.70	3.00	0.75	3.50	0.90	
	2	Wheat Bran, Rice Bran	Bags	25	2.20	0.55	2.70	0.70	3.20	0.80	
	3	Cattle feed (Processed)	Bags	45	2.55	0.55	2.80	0.70	3.20	0.80	
	4	Milko-Milk	Bags	30	2.70	0.70	2.90	0.75	3.20	0.80	
	5	Cotton seed Husk	Bags	25	2.20	0.55	2.70	0.75	3.20	0.80	
	6	Maize husk	Bags	25	2.20	0.55	2.70	0.75	3.20	0.80	
<b>XIII</b>		<b>FOREST PRODUCTS :</b>									
	1	Casimon Stems	Bags	46	2.20	0.55	2.90	0.75	3.20	0.80	
	2	Nixvomin Bark	Bags	31	2.20	0.55	2.80	0.70	3.00	0.75	

	<b>3</b>	<b>Nixvomin Seeds</b>	<b>Bags</b>	<b>75</b>	<b>2.20</b>	<b>0.55</b>	<b>2.90</b>	<b>0.75</b>	<b>3.20</b>	<b>0.80</b>	
	<b>4</b>	<b>Rampatri</b>	<b>Bags</b>	<b>35</b>	<b>3.20</b>	<b>0.80</b>	<b>3.30</b>	<b>0.80</b>	<b>3.40</b>	<b>0.85</b>	
	<b>5</b>	<b>Kulanji seeds</b>	<b>Bags</b>	<b>28</b>	<b>2.00</b>	<b>0.50</b>	<b>2.10</b>	<b>0.55</b>	<b>2.20</b>	<b>0.60</b>	
	<b>6</b>	<b>Uppege Huli</b>	<b>Bags</b>	<b>60</b>	<b>10.50</b>	<b>2.65</b>	<b>12.50</b>	<b>3.10</b>	<b>14.00</b>	<b>3.50</b>	
	<b>XIV</b>	<b>MISCELLANEOUS :</b>									
	<b>1</b>	<b>Coffee seeds (low Grade)</b>	<b>Bags</b>	<b>80</b>	<b>6.00</b>	<b>1.50</b>	<b>7.30</b>	<b>1.85</b>	<b>8.50</b>	<b>2.10</b>	
	<b>2</b>	<b>Tea Dust (Packed Chest ) (In Chests of 2 1/2 cft)</b>	<b>Bags</b>	<b>37</b>	<b>6.00</b>	<b>1.50</b>	<b>7.30</b>	<b>1.85</b>	<b>8.50</b>	<b>2.10</b>	
	<b>3</b>	<b>Chicory (dried Roots)</b>	<b>Bags</b>	<b>60</b>	<b>3.40</b>	<b>0.85</b>	<b>4.20</b>	<b>1.05</b>	<b>4.50</b>	<b>1.15</b>	
	<b>4</b>	<b>Chicory (Powder)</b>	<b>Bags</b>	<b>40</b>	<b>4.25</b>	<b>1.10</b>	<b>4.50</b>	<b>1.15</b>	<b>5.20</b>	<b>1.30</b>	
	<b>5</b>	<b>Pundi Seeds</b>	<b>Bags</b>	<b>100</b>	<b>3.70</b>	<b>0.95</b>	<b>4.50</b>	<b>1.15</b>	<b>6.00</b>	<b>1.50</b>	
	<b>6</b>	<b>Aluminum Powder</b>	<b>Bags</b>	<b>50</b>	<b>30.50</b>	<b>7.65</b>	<b>35.20</b>	<b>8.80</b>	<b>38.50</b>	<b>9.70</b>	
	<b>7</b>	<b>Cashew nuts:</b>									
		<b>a) Pods</b>	<b>Bags</b>	<b>75</b>	<b>4.40</b>	<b>1.10</b>	<b>4.50</b>	<b>1.15</b>	<b>5.20</b>	<b>1.30</b>	
			<b>Bags</b>	<b>76-94</b>	<b>5.15</b>	<b>1.30</b>	<b>5.50</b>	<b>1.40</b>	<b>5.90</b>	<b>1.50</b>	
		<b>b) Kernels</b>	<b>Tins</b>	<b>17</b>	<b>4.40</b>	<b>1.10</b>	<b>4.50</b>	<b>1.15</b>	<b>5.20</b>	<b>1.30</b>	

		<b>c) Wooden Chests</b>	<b>Chest</b>	<b>12.23</b>	<b>4.70</b>	<b>1.20</b>	<b>5.25</b>	<b>1.30</b>	<b>5.60</b>	<b>1.40</b>	
	<b>8</b>	<b>Arecanut</b>	<b>Bags</b>	<b>80</b>	<b>6.00</b>	<b>1.50</b>	<b>6.80</b>	<b>1.70</b>	<b>8.00</b>	<b>2.00</b>	
	<b>9</b>	<b>Soapnut</b>	<b>Bags</b>	<b>35</b>	<b>2.90</b>	<b>0.75</b>	<b>3.20</b>	<b>0.80</b>	<b>3.85</b>	<b>1.00</b>	
	<b>10</b>	<b>Soapnut Ritha</b>	<b>Bags</b>	<b>50</b>	<b>2.90</b>	<b>0.75</b>	<b>3.30</b>	<b>0.85</b>	<b>3.50</b>	<b>0.90</b>	
	<b>11</b>	<b>Tamarind Seeds</b>	<b>Bags</b>	<b>26 - 50</b>	<b>1.80</b>	<b>0.45</b>	<b>2.30</b>	<b>0.60</b>	<b>2.50</b>	<b>0.65</b>	
			<b>Bags</b>	<b>51 - 75</b>	<b>2.65</b>	<b>0.70</b>	<b>3.25</b>	<b>0.80</b>	<b>3.60</b>	<b>0.90</b>	
			<b>Bags</b>	<b>100</b>	<b>3.60</b>	<b>0.90</b>	<b>4.30</b>	<b>1.10</b>	<b>5.00</b>	<b>1.25</b>	
	<b>12</b>	<b>Baje</b>	<b>Bags</b>	<b>30-40</b>	<b>1.70</b>	<b>0.45</b>	<b>1.85</b>	<b>0.50</b>	<b>1.95</b>	<b>0.50</b>	
			<b>Bags</b>	<b>80</b>	<b>3.35</b>	<b>0.85</b>	<b>3.70</b>	<b>0.95</b>	<b>3.85</b>	<b>1.00</b>	
	<b>13</b>	<b>CottonSeeds (Processed ) (Protein concentrate )</b>	<b>Bags</b>	<b>30</b>	<b>2.00</b>	<b>0.50</b>	<b>2.10</b>	<b>0.55</b>	<b>2.90</b>	<b>0.75</b>	
	<b>14</b>	<b>Onion seeds</b>	<b>Bags</b>	<b>55</b>	<b>3.40</b>	<b>0.85</b>	<b>3.75</b>	<b>0.95</b>	<b>4.25</b>	<b>1.10</b>	
	<b>15</b>	<b>Beedi Leaves</b>	<b>Bags</b>	<b>40</b>	<b>4.25</b>	<b>1.05</b>	<b>4.40</b>	<b>1.10</b>	<b>4.65</b>	<b>1.15</b>	
	<b>16</b>	<b>Agriculture Line (Powder)</b>	<b>Bags</b>	<b>75</b>	<b>2.20</b>	<b>0.55</b>	<b>2.30</b>	<b>0.60</b>	<b>3.00</b>	<b>0.75</b>	
	<b>17</b>	<b>Solanum Berries</b>	<b>Bags</b>	<b>25</b>	<b>2.90</b>	<b>0.75</b>	<b>3.10</b>	<b>0.80</b>	<b>3.30</b>	<b>0.85</b>	
	<b>18</b>	<b>Unhusked Coconut</b>	<b>per 10 Nos.</b>	<b>-</b>	<b>1.65</b>	<b>0.40</b>	<b>2.00</b>	<b>0.50</b>	<b>2.50</b>	<b>0.60</b>	
	<b>19</b>	<b>Tobacco Bodhs upto 60</b>	<b>Bags</b>	<b>-</b>	<b>7.40</b>	<b>1.90</b>	<b>8.00</b>	<b>2.00</b>	<b>8.50</b>	<b>2.20</b>	

<b>XV</b>		<b>NOTIFIED COMMODITIES:</b>									
	<b>1</b>	<b>Gunny Bales (old &amp; new unpressed )</b>	<b>Bundl es</b>	<b>50 Gunnies</b>	<b>6.30</b>	<b>1.60</b>	<b>7.40</b>	<b>1.90</b>	<b>9.00</b>	<b>2.25</b>	
		<b>Paper packed in Hessin</b>	<b>1 cft or part</b>	<b>1 cft</b>	<b>0.70</b>	<b>0.20</b>	<b>0.80</b>	<b>0.25</b>	<b>1.00</b>	<b>0.30</b>	
	<b>3</b>	<b>News Print Rolls</b>	<b>Area Basis Rates</b>	<b>80</b>	<b>14.00</b>	<b>3.50</b>	<b>15.30</b>	<b>4.00</b>	<b>17.50</b>	<b>4.40</b>	
	<b>4</b>	<b>Cement</b>	<b>Bags</b>	<b>50</b>	<b>3.00</b>	<b>0.75</b>	<b>3.25</b>	<b>0.80</b>	<b>3.50</b>	<b>0.90</b>	
<b>XVI</b>		<b>INSECTICIDES:</b>									
	<b>1</b>	<b>Malathion Dust(cythion)</b>	<b>Bags</b>	<b>25</b>	<b>1.80</b>	<b>0.45</b>	<b>2.10</b>	<b>0.50</b>	<b>2.20</b>	<b>0.55</b>	
	<b>2</b>	<b>Parathion Dust</b>	<b>Bags</b>	<b>50</b>	<b>2.80</b>	<b>0.70</b>	<b>3.10</b>	<b>0.80</b>	<b>3.30</b>	<b>0.85</b>	
	<b>3</b>	<b>Sulphur Dust</b>	<b>Bags</b>	<b>50</b>	<b>2.80</b>	<b>0.70</b>	<b>3.10</b>	<b>0.80</b>	<b>3.30</b>	<b>0.75</b>	
	<b>4</b>	<b>BHC 10%</b>	<b>Bag/P kt</b>	<b>50</b>	<b>1.80</b>	<b>0.45</b>	<b>2.10</b>	<b>0.50</b>	<b>2.20</b>	<b>0.55</b>	
	<b>5</b>	<b>DDT 10%</b>	<b>Bags</b>	<b>50</b>	<b>1.80</b>	<b>0.45</b>	<b>2.10</b>	<b>0.50</b>	<b>2.20</b>	<b>0.55</b>	
	<b>6</b>	<b>Carborly 10% Dust</b>	<b>Bags</b>	<b>25</b>	<b>1.80</b>	<b>0.45</b>	<b>2.10</b>	<b>0.50</b>	<b>2.20</b>	<b>0.55</b>	
	<b>7</b>	<b>Savin 5%</b>	<b>Bags</b>	<b>25</b>	<b>1.80</b>	<b>0.45</b>	<b>2.10</b>	<b>0.50</b>	<b>2.20</b>	<b>0.55</b>	
	<b>8</b>	<b>Octonol</b>	<b>Barrel</b>	<b>-</b>	<b>32.25</b>	<b>8.10</b>	<b>35.50</b>	<b>8.90</b>	<b>42.00</b>	<b>10.50</b>	

	<b>9</b>	<b>Soda Ash</b>	<b>Barrel</b>	<b>75</b>	<b>4.10</b>	<b>1.00</b>	<b>4.25</b>	<b>1.05</b>	<b>4.40</b>	<b>1.10</b>	
	<b>10</b>	<b>Basalin BC</b>	<b>Per Case</b>	<b>-</b>	<b>1.80</b>	<b>0.45</b>	<b>2.10</b>	<b>0.50</b>	<b>2.20</b>	<b>0.55</b>	
	<b>XVII</b>	<b>HYBRID SEEDS :</b>									
		<b>a) Jowar Maize, Bajra and other seeds</b>	<b>Bags</b>	<b>50</b>	<b>6.75</b>	<b>1.75</b>	<b>7.75</b>	<b>2.00</b>	<b>8.50</b>	<b>2.20</b>	
		<b>b) i ) Paddy seeds</b>	<b>Bags</b>	<b>25</b>	<b>2.40</b>	<b>0.60</b>	<b>2.50</b>	<b>0.65</b>	<b>2.90</b>	<b>0.75</b>	
		<b>ii ) Paddy seeds</b>	<b>Bags</b>	<b>30</b>	<b>2.90</b>	<b>0.75</b>	<b>3.20</b>	<b>0.80</b>	<b>3.40</b>	<b>0.85</b>	
		<b>iii ) Paddy seeds</b>	<b>Bags</b>	<b>80</b>	<b>5.50</b>	<b>1.40</b>	<b>5.90</b>	<b>1.50</b>	<b>6.40</b>	<b>1.60</b>	
		<b>c) Certified seeds of all varieties</b>	<b>Bags</b>	<b>50</b>	<b>6.75</b>	<b>1.70</b>	<b>7.75</b>	<b>2.00</b>	<b>8.25</b>	<b>2.10</b>	
		<b>d) Wheat Seeds</b>	<b>Bags</b>	<b>20</b>	<b>2.00</b>	<b>0.50</b>	<b>2.20</b>	<b>0.55</b>	<b>2.40</b>	<b>0.60</b>	
			<b>Bags</b>	<b>40</b>	<b>3.40</b>	<b>0.85</b>	<b>3.70</b>	<b>1.00</b>	<b>4.10</b>	<b>1.05</b>	
			<b>Bags</b>	<b>80</b>	<b>4.60</b>	<b>1.15</b>	<b>4.85</b>	<b>1.25</b>	<b>5.20</b>	<b>1.30</b>	
		<b>e) Varalaxmi Cotton Seeds</b>	<b>Bags</b>	<b>20</b>	<b>28.00</b>	<b>7.00</b>	<b>29.70</b>	<b>7.45</b>	<b>33.00</b>	<b>8.25</b>	
	<b>I</b>	<b>OIL SEED:</b>									
	<b>1</b>	<b>Sun Flower Seeds</b>	<b>Bags</b>	<b>50-100</b>	<b>4.40</b>	<b>1.10</b>	<b>4.50</b>	<b>1.15</b>	<b>5.00</b>	<b>1.25</b>	
	<b>II</b>	<b>SPICES :</b>									
	<b>1</b>	<b>Pepper</b>	<b>Bags</b>	<b>50</b>	<b>3.70</b>	<b>1.00</b>	<b>4.50</b>	<b>1.15</b>	<b>5.20</b>	<b>1.30</b>	

	2	Turmeric	Bags	80	7.50	1.90	8.25	2.10	9.50	2.40	
	3	Papadkhara	Bags	75	3.70	1.00	4.40	1.10	4.60	1.15	
<b>III</b>		<b>CERTIFIED SEEDS :</b>									
	1	G.N Pods	Bags	15	1.50	0.40	1.60	0.40	1.75	0.50	
<b>IV</b>		<b>MISCELLANEOUS :</b>									
	1	Coconut (Husked)	Bags	60-70	4.00	1.00	4.50	1.15	4.90	1.25	
	2	Potassium Nitrate	Bags	50	5.10	1.30	6.30	1.60	6.50	1.70	
	3	Zinc Sulphate	Bags	50	4.00	1.00	4.80	1.20	5.10	1.30	
	4	Pierced Cocoons	Bags	30	17.00	4.25	20.00	5.00	21.50	5.50	

## **Right to Information Act 2005:**

The Corporation has designated the following officers as State Public Information Officers and the Assistant Public Information Officers to receive application for information or appeals from the persons seeking information's under the said Act.

Details of the Officers designated to receive the complaints and public grievance is already given above in the RTI Act.

Sl. No.	State Public Information's Officers		Assistant Public Information Officers	Appellate Authority
<b>I</b>	<b>Head Office:</b>			
1	Administration /Vigilance Section	Administrative / Vigilance Officer	Concerned Warehouse Managers or Warehouse Manager-in-charges of all Warehouse centres	Managing Director, Karnataka State Warehousing Corporation, No. 43, Primrose Road, Bengaluru-560025.
2	Secretary Section	Secretary		
3	Commercial Section	General Manager (Commercial)		
4	Technical Section	General Manager (Technical)		
5	Accounts Section	Deputy General Manager (Accounts)		
6	Audit Section	Deputy Manager (Audit)		
7	Engineering Section	Executive Engineer		
<b>II</b>	<b>At field level (in respect of Warehouse Centre)</b>			
1	All Concerned Regional Managers			

## **Grievances Redressal Mechanism Cell:**

Any Public grievances can be addressed to the Head office at state level, Regional level at Regional Office and Field level at Warehouse Centers.



**Officer's contact list with Telephone No @ HO and RM Offices:**

SL. No.	Designation	Office	E-Mail	Mobile Numbers
1	Chairman	KSWC: 25574650	<a href="mailto:chairman@kswc.in">chairman@kswc.in</a>	
2	Managing Director	25571656 Dir:25303143	<a href="mailto:md@karnatakawarehousing.in">md@karnatakawarehousing.in</a>	7760966901
3.	Administrative Officer/ Vigilance Officer	25550963	<a href="mailto:ao@kswc.in">ao@kswc.in</a>	7760966914
4	Secretary	25511498	<a href="mailto:secretary@kswc.in">secretary@kswc.in</a>	7760967051
5	General Manager (TQC)	25511498	<a href="mailto:gm_tqc@karnatakawarehousing.in">gm_tqc@karnatakawarehousing.in</a>	7760966903
6	General Manager (COM)	25586116	<a href="mailto:gm.com@kswc.in">gm.com@kswc.in</a>	7760966904
7	EE	25551147	<a href="mailto:ee@kswc.in">ee@kswc.in</a>	7760966905
8	D.G.M.(Act)	25579647	<a href="mailto:dm.act@kswc.in">dm.act@kswc.in</a>	7760966906
9	RM, Mysore	0821-2427279	<a href="mailto:rm.mysore@kswc.in">rm.mysore@kswc.in</a>	7760966934
10	RM, Bangalore	080-26565065	<a href="mailto:rm.bangalore@kswc.in">rm.bangalore@kswc.in</a>	7760966921
11	RM, Davanagere	08192-224190	<a href="mailto:rm.davanagere@kswc.in">rm.davanagere@kswc.in</a>	7760966964
12	RM, Shimoga	08182-273691	<a href="mailto:rm.shimoga@kswc.in">rm.shimoga@kswc.in</a>	7760966953
13	RM, Hubli	0836-2353685	<a href="mailto:rm.hubli@kswc.in">rm.hubli@kswc.in</a>	7760966981
14	RM, Gulbarga	08472-250400	<a href="mailto:rm.gulbarga@kswc.in">rm.gulbarga@kswc.in</a>	7760967023
15	RM. Raichur	08532-235861	<a href="mailto:rm.raichur@kswc.in">rm.raichur@kswc.in</a>	7760967006

**MANAGING DIRECTOR**

